

Zoom Edge UF-ZME5

Total area including bleed:
850 (w) x 4346 (h) mm

Finished size:
830 (w) x 4326 (h) mm

Visible area:
748.5 (w) x 4300(h) mm

Please keep all text, logos and critical design elements to the inside of the safe area indicated by the green keyline.

Single sided show through print.

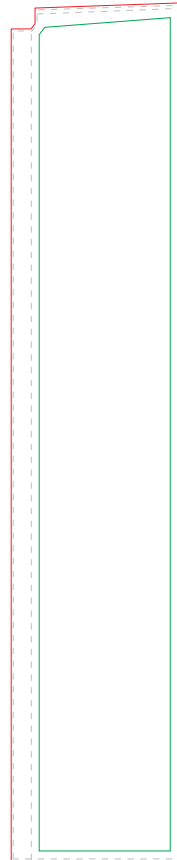
All sizes are approximate.

General guidelines

- CMYK
- Convert Pantone colours to CMYK.
- Do not supply RGB images.
- Do not embed images, supply them.
- Resolution must be 300 dpi at 25% of output size.
- All fonts must be converted to outlines.
- Please supply artwork as PDF or Illustrator EPS files.

This template

- Is supplied at 25% of finished size.
- Includes bleed (as shown by the red keyline).



Zoom Edge UF-ZME3

Total area including bleed:
850 (w) x 2346 (h) mm

Finished size:
830 (w) x 2326 (h) mm

Visible area:
748.5 (w) x 2300(h) mm

Please keep all text, logos and critical design elements to the inside of the safe area indicated by the green keyline.

Single sided show through print.

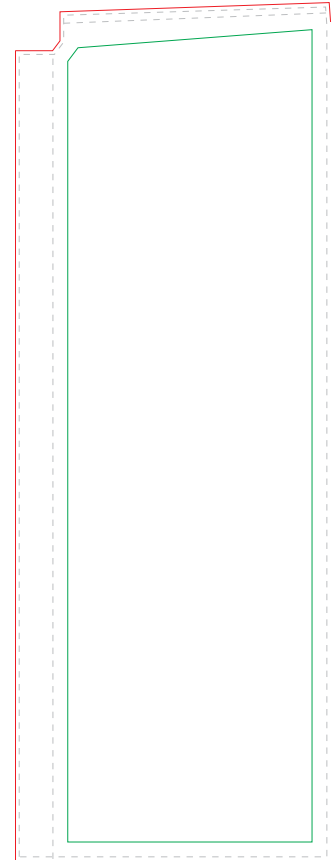
All sizes are approximate.

General guidelines

- CMYK
- Convert Pantone colours to CMYK.
- Do not supply RGB images.
- Do not embed images, supply them.
- Resolution must be 300 dpi at 25% of output size.
- All fonts must be converted to outlines.
- Please supply artwork as PDF or Illustrator EPS files.

This template

- Is supplied at 25% of finished size.
- Includes bleed (as shown by the red keyline).



Zoom Edge UF-ZME4

Total area including bleed:
850 (w) x 3346 (h) mm

Finished size:
830 (w) x 3326 (h) mm

Visible area:
748.5 (w) x 3300(h) mm

Please keep all text, logos and critical design elements to the inside of the safe area indicated by the green keyline.

Single sided show through print.

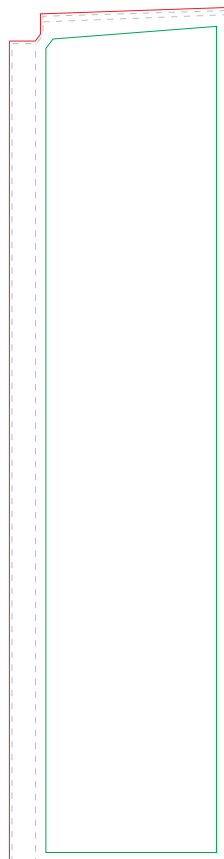
All sizes are approximate.

General guidelines

- CMYK
- Convert Pantone colours to CMYK.
- Do not supply RGB images.
- Do not embed images, supply them.
- Resolution must be 300 dpi at 25% of output size.
- All fonts must be converted to outlines.
- Please supply artwork as PDF or Illustrator EPS files.

This template

- Is supplied at 25% of finished size.
- Includes bleed (as shown by the red keyline).



Zoom Edge UF-ZME2

Total area including bleed:
850 (w) x 1346(h) mm

Finished size:
830 (w) x 1326 (h) mm

Visible area:
748.5 (w) x 1300(h) mm

Please keep all text, logos and critical design elements to the inside of the safe area indicated by the green keyline.

Single sided show through print.

All sizes are approximate.

General guidelines

- CMYK
- Convert Pantone colours to CMYK.
- Do not supply RGB images.
- Do not embed images, supply them.
- Resolution must be 300 dpi at 25% of output size.
- All fonts must be converted to outlines.
- Please supply artwork as PDF or Illustrator EPS files.

This template

- Is supplied at 25% of finished size.
- Includes bleed (as shown by the red keyline).

